



Return to School - Phase 1 WEEK 3

Dear Parents and Carers,

Thank you again for your continued support through these difficult times. In line with Department of Education guidelines there will be a phased return to school model implemented from Monday 11 May 2020. Ensuring our school is a safe place to work and learn is paramount. The Phase 1 return model allows us the opportunity to test our health and safety procedures with increased numbers of students and staff on site.

We are limited to a maximum of 15 students in classrooms during Phase 1. I ask that unless it is absolutely necessary that you please continue to keep your child at home except for their allocated day so that we can provide adequate supervision in line with Department guidelines and our staffing capabilities. Failure to do so may place staff and students at potential increased risk. Each classroom will have access to hand sanitiser and surface cleaner to assist in the reduction of risk of infection for students and staff. Hand soap is available in all toilets. Additional full time cleaning will commence from Monday.

In Phase 1 all classes are continuing online Remote Learning. Whether at school or at home, students in Years 7 to 11 will be engaging in their work online. On their designated day, students will be able to seek clarification and assistance in class time directly from a supervising teacher.

Students who received hard copies of work last term will be required to return completed work to school on their first allocated day. Students who have been issued a laptop for use at home will be required to bring the laptop with them to use at school and then will be able to take with them at the end of the day.

Year 12 students will return four days per week from 11 May 2020. Year 12 students for the most part will return to normal classes with explicit teaching but work will still be available on line for students unable to attend. Year 12 students will also be able to access practical activities as needed, with Wednesday being allocated to Year 12 students with a Practical HSC Major Project or Performance.

All students in the Special Education Unit have been allocated two days per week at this stage.

Students must only attend on their allocated day unless previous arrangements for essential workers children have been made.

Expectations:

The safety of students and staff is our main priority during the COVID-19 pandemic. As the numbers of students and staff increases on our site there are some expectations that student's MUST follow:

- Normal code of student behaviour will be applied, especially concerning the health and safety of others. Students MUST follow ALL staff instructions.
- Students who are unwell MUST stay at home. Any student showing cold or flu like symptoms must be picked up from school. Sick students will not be able to remain in our school clinic.
- Regular handwashing for students will be expected, especially before eating at breaks.
- Students MUST remain 1.5m apart wherever possible. Classrooms will be limited to a maximum of 15 students.
- Students MUST not share drinks, food or equipment. Students must bring their own equipment (pens, pencils, calculators etc.) as these items will not be provided by staff.
- Students MUST use the same laptop/chromebook/computer at school during Phase 1 and these devices will be cleaned at the end of each day.

Additionally:

- Uniform: Students are expected to be in full school uniform on the days they attend.
- Canteen: The canteen will not be operating at during Phase 1 return. Students will need to bring their own recess and lunch from home
- Sport/Excursions: There will be no sporting activities or excursions until further notice.

Q and A:

1. Do I have to send my child back to school or do I have the option to continue Remote Learning?

The Government and Department of Education are encouraging students to return according to each school's Phase 1 Plan. We believe it is in the interests of students' learning and wellbeing, however, it is not compulsory to attend school at this time. Roll marking will still occur in the online platform.

2. Can I change my child's day of attending school?

NO, to enable us to manage a complex and challenging variation of routine and supervision. Due to blended families, a small number of identified students will attend on a day that is not their House Group's day. Please send them only on the day that has been allocated following the phone call from school.

3. I have been sending my child to school full time as I am an essential worker. Can I continue to do this?

Yes - this has always been an option, however, if this pushes a 7 - 11 class over 15 students then they will be supervised in a different location.

4. Will I receive a text message or call from the school if my child is supposed to be at school and does not attend?

We will be sending messages or calling parents after roll call each day to confirm whether you have sent your child to school or not. We need to ensure that if your child was sent to school and failed to arrive that you are aware as soon as possible so that appropriate actions can be taken.

A separate flyer is on the back page of this newsletter outlining the days of attendance.

Years 7, 8, 9, 10 and 11 Mainstream: Students have been allocated 1 day per week and will return based on Houses.

MONDAY Barramundi, Surnames A – D

TUESDAY Marlin, Surnames E – K

WEDNESDAY Essential Workers Students ONLY (Year 12 see below)

THURSDAY Nannygai, Surnames L – R

FRIDAY Trevally, Surnames S – Z

Students in Year 12:

- Students return Monday, Tuesday, Thursday and Friday for normal classes.
- Students with a HSC Major Project or Performance may attend Wednesday.

Special Education Students:

Students will have been allocated 2 days per week and will return as indicated below:

MONDAY Room 13, Room 21, Room 25

TUESDAY Room 23, Room 24, Room 26

WEDNESDAY Essential Workers Students ONLY

THURSDAY Room 23, Room 24, Room 26

FRIDAY Room 13, Room 21, Room 25

If we all adhere to the expectations and procedures outlined above we can be confident in ensuring everyone's safety during this phased return to school. The situation remains fluid and is still dependent upon Department of Education and Government information. I will continue to endeavour to make our school a safe and healthy place for staff and students.

Regards

Paul Humphrey

Principal

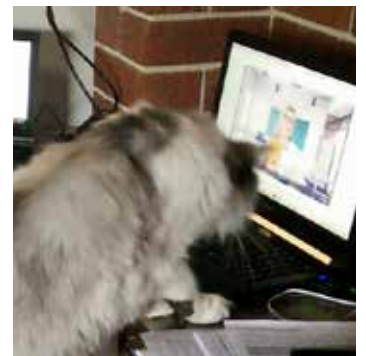
Pets are enjoying having their humans home, so we asked our students and staff to share photos of their animals..we got so many we couldn't fit them all in!



Frankie Atkins has been still enjoying morning walks!
Ms Cutter's dog below, Cookie Cutter = Cute!



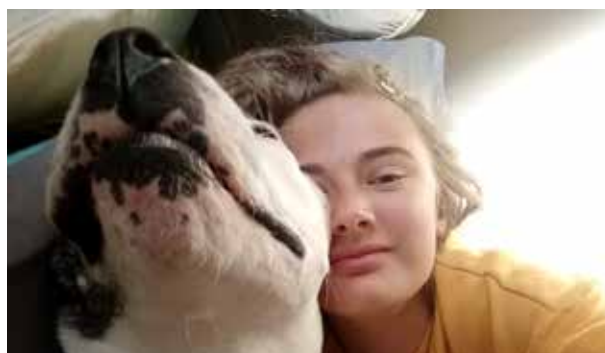
This is 10 week old British bulldog, Coco, Head Teacher CAPA, Jo Taylor's fur baby.



SLSO, Alistair Grierson, above working from home.



English Teacher, Katherine Melrose is the proud owner of the perfectly behaved Louis.



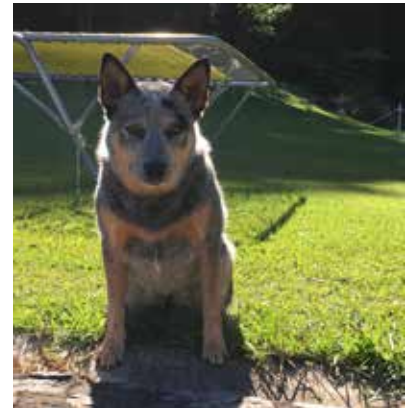
NEWS LETTER

Safe Respectful Learners

TERM 2 | WEEK 2 | May 2020



Stella Hamey left and Stella Stocks above!



How good are our THS pet photographers!!!



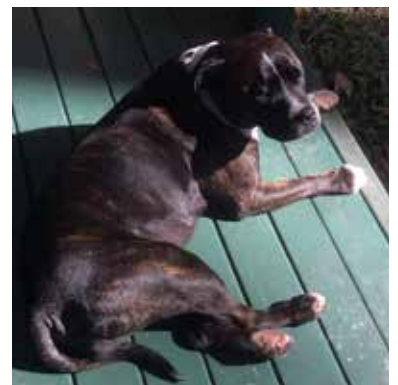
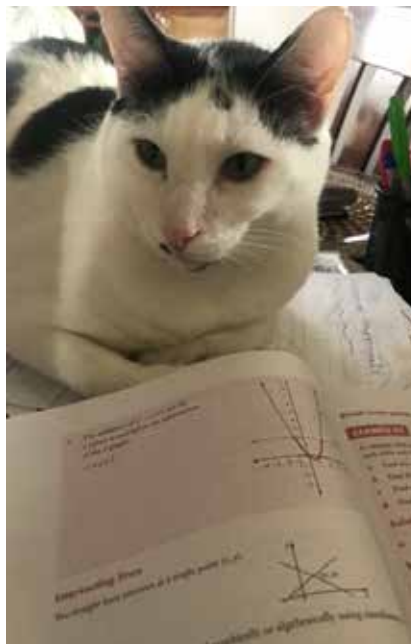
Meet Fifi Sharkey above left.



NEWS LETTER

Safe Respectful Learners

TERM 2 | WEEK 2 | May 2020



Buddy Stanton is, of course, very interested in mathematics!

Mr Berrada has to close the blind to get any work done because Rafa is always ready to play!



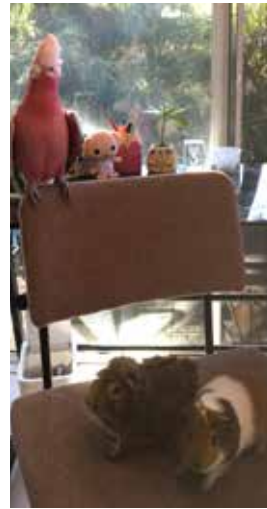
HSIE teacher, Bridget Kramer, has cows for pets! Science teacher Matt Ryan has a very chilled Opi on the left.



NEWS LETTER

Safe Respectful Learners

TERM 2 | WEEK 2 | May 2020



Mr Mill's rescue dogs below right, are Toy Cavoodles, Rusty, Evie and Jade!



NEWS LETTER

Safe Respectful Learners

TERM 2 | WEEK 2 | May 2020



Ms Brennan's dog, Ghost, has had his photo edited by student Samantha Edwards, year 9, to make him a king! Below King Ghost Brennan is Ms Hardy's beautiful, Moshi, keeping her office chair warm and below is Ms Griffiths with her mini dachshund, Sam.



TDRMINA HIGH SCHOOL

WEEK BEGINNING MONDAY 11 MAY 2020

Parents:
Please send your child on their allocated day only as directed by the NSW Government.

Monday

Year 7, 8, 9, 10 and 11
Mainstream Students:

- **Surnames A – D and Essential Workers Children ONLY**

What will students be doing?

Students will be engaging in online learning with face-to-face teacher assistance in a single classroom.

Special Education Students:

- **Room 13, Room 21, Room 25 and Essential Workers Children ONLY**

What will students be doing?

Students will be engaging in their normal classes with face-to-face teaching.

Year 12 Mainstream Students:

- **ALL Year 12 students in Mainstream classes to return**

What will students be doing?

Students will be in normal classes with a modified timetable.

Tuesday

Year 7, 8, 9, 10 and 11
Mainstream Students:

- **Surnames E - K and Essential Workers Children ONLY**

What will students be doing?

Students will be engaging in online learning with face-to-face teacher assistance in a single classroom.

Special Education Students:

- **Room 23, Room 24, Room 26 and Essential Workers Children ONLY**

What will students be doing?

Students will be engaging in their normal classes with face-to-face teaching.

Year 12 Mainstream Students:

- **ALL Year 12 students in Mainstream classes to return**

What will students be doing?

Students will be in normal classes with a modified timetable.

Wednesday

All Year 7 – 12 Students will work from home today, **UNLESS:**

- **Essential Workers Children can attend school.**

Year 12 Students with a HSC Practical Project or Performance (Industrial Technology, Design and Technology, Drama, Visual Arts and Music) can negotiate with their teachers to attend school to work on their projects.

Students attending school must:

- Bring their school issued laptop with them each day of attendance.
- Wear school uniform.
- Maintain physical distancing (where possible).
- Follow all teacher instructions.
- Bring your 'Hard Copy' (printed) work to school.

Thursday

Year 7, 8, 9, 10 and 11
Mainstream Students:

- **Surnames L - R and Essential Workers Children ONLY**

What will students be doing?

Students will be engaging in online learning with face-to-face teacher assistance in a single classroom.

Special Education Students:

- **Room 23, Room 24, Room 26 and Essential Workers Children ONLY**

What will students be doing?

Students will be engaging in their normal classes with face-to-face teaching.

Year 12 Mainstream Students:

- **ALL Year 12 students in Mainstream classes to return**

What will students be doing?

Students will be in normal classes with a modified timetable.

Friday

Year 7, 8, 9, 10 and 11
Mainstream Students:

- **Surnames S - Z and Essential Workers Children ONLY**

What will students be doing?

Students will be engaging in online learning with face-to-face teacher assistance in a single classroom.

Special Education Students:

- **Room 13, Room 21, Room 25 and Essential Workers Children ONLY**

What will students be doing?

Students will be engaging in their normal classes with face-to-face teaching.

Year 12 Mainstream Students:

- **ALL Year 12 students in Mainstream classes to return**

What will students be doing?

Students will be in normal classes with a modified timetable.